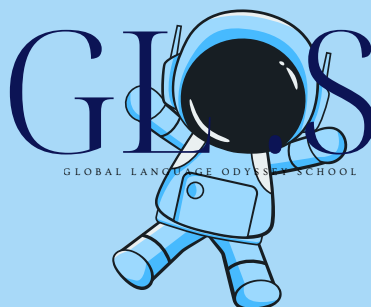


# PRICING

# 2025-2026



# GLOP STAYS & CAMPS

## FRENCH IMMERSION IN PARIS

## CALENDAR AND PRICES

# 2025/26

**Groups welcome on Sundays, admission every Monday.**

**Individual admission every Monday for all levels except complete beginners.**



**Individual complete beginners** are only accepted at the beginning of the session.

### COURSE OPTION

**A:** 10 lessons of 1 hour 15 minutes (General NFL)

**B:** 15 lessons of 1 hour 15 minutes (Intensive)

**Price per week - Option A (12:30 p.m.)**

**1 week**

Language courses - Activities - Full board hotel

€2380

**2 weeks**

Language courses - Activities - Full board hotel

€3400

**Price per week - Option B (6:45 p.m./S)**

**1 week.**

Language courses - Activities - Full board hotel

€2520

**2 weeks.**

Language courses - Activities - Full board hotel

€3600

## PROGRAM IN PARIS LIKE EMILY (12-17 years and older)

*In Paris like Emily* is an immersive language stay specially designed for young girls wanting to live the Parisian experience "à la Emily in Paris": fashion, culture, lifestyle, social networks, communication, creativity.

**1 week**

€3083

Parisian-style French courses - Fashion, culture and gastronomy activities - Full-board hotel

**10 days**

€3817

Parisian-style French courses - Fashion, culture and gastronomy activities - Full-board hotel

**2 weeks Prestige Edition**

€4490

Parisian-style French courses - Fashion, culture and gastronomy activities - Full-board hotel + Prestige activities

**Dates: To be defined - Spring/Summer season**

**CONTACT US FOR CUSTOM-MADE ACTIVITIES**

**REGISTRATION FEES**  
for all training courses

**95€**

**CALENDAR  
AND PRICES**

**2025/26**

## TCF/TEF-TEFAQ/DELF CERTIFICATE PREPARATION

### Online preparation

Dates, duration (according to level assessed - 15 hours minimum) and tailor-made timetables

**Private lessons** (60 minutes).

**€75**

### Semi-private lessons

(1h15, from 2 students up to 5 maximum)

**€55**

**TRAINING ABROAD: [CONTACT US](#)**



## NEURO FAST LEARNING PROGRAM FRENCH SUPERCOM

**All our NFL training courses last a minimum of 2 weeks** (27h/week)  
**Classes in person in-company/online/hybrid**

### NFL Intensive + FRENCH Program

**2 weeks**

**€1990**

NFL General Program + 10 Supercom courses - Technical approach

### NFL Super Intensive French Program

**2 weeks**

**€2790**

NFL General + Intensive Plus Program + 4 Supercom courses -  
Technical approach

### Private NFL FRENCH lessons

**Customized program, level, dates, duration, format and schedules**

**1 lesson** (60 minutes)

**€75**

**TRAINING ABROAD: [CONTACT US](#)**

## FRENCH FOR PROFESSIONAL PURPOSES

**French for Business/Tourism/Hotel Administration & Culinary arts**

**2 weeks training** (B1 level required)

**€1295**

**Semi-private in person in-company/online/hybrid**

**Dates on request**

**Private lessons** (B1 level required)

**Customized dates, duration, format and schedules**

**1 lesson** (60 minutes)

**€75**

**TRAINING ABROAD: [CONTACT US](#)**



# CALENDAR AND PRICES 2025/26

## PREMIUM BABY BOOM PROGRAM

<b>1 week</b>	<b>€2380</b>
French for Tourism courses in the morning – Tailor-made cultural program in the afternoon – Full board hotel	
<b>10 days</b>	<b>€2995</b>
French for Tourism courses in the morning – Tailor-made Cultural Program – Full Board Hotel	
<b>2 weeks</b>	<b>€3400</b>
French for Tourism courses in the morning – Tailor-made Cultural Program – Full Board Hotel	

**Dates: To be defined (SPRING or SUMMER)**

## EXTERNAL TRAINING FOR FRENCH TEACHERS (FLE/FLS)

THESE COURSES ARE PRIMARILY INTENDED FOR TEACHING FRENCH ABROAD, BUT THEY CAN ALSO BE TAUGHT IN FRANCE. PRICES ARE PROVIDED FOR INFORMATIONAL PURPOSES ONLY.

**Teaching FLE today: intercultural, digital, neuro-pedagogical and super-communicative**

2-week training **€1990**

**Dates:** all year round on request

**Observation, evaluation and improvement of teaching practice**

1-week training **€995**

**Dates:** all year round on request

**Language development for French teachers**

Per week **€995**

**Dates:** all year round on request

ALL OUR EXTERNAL TRAINING COURSES LAST FROM 1 TO 2 WEEKS MINIMUM - IN-PERSON IN-COMPANY, ONLINE OR HYBRID

TRAINING ABROAD: [CONTACT US](#)



[CONTACT US FOR CUSTOM-MADE ACTIVITIES](#)



## ACCOMMODATION

Plan your arrival on Sunday afternoon and your departure on Saturday morning.

### Hotels

**Group:** Price included in the overall package (courses, activities, food, accommodation)

**Individual:** price defined according to the duration of the chosen course program, the size of the room and the number of meals (full board, half board)

### Long stays

Special monthly rates, please contact us.

### Transfers

Paris, contact us

**CONTACT US FOR ALL DETAILS**

## GENERAL CONDITIONS OF SALE AND PUBLIC HOLIDAYS

Registration for one of our courses implies acceptance of our general conditions of sale.

Classes do not take place on the following public holidays:

- January 1, April 21, May 1, May 8, May 29, June 9, August 15, November 11, December 25, 2025.
- January 1, April 6, May 1, May 8, May 14, May 25, August 15, November 11, December 25, 2026.
- This does not give rise to any reimbursement, compensation or postponement.

### GROUP PAYMENT SCHEDULE

#### Payment schedule and consequences in case of non-compliance

For any stay reservation, the Client agrees to respect the following payment schedule:

- a deposit equivalent to **30% of the total amount** of the stay must be paid **no later than four (4) months before** the start date of the stay, in order to confirm the reservation;
- a second payment corresponding to **60% of the total amount must be paid no later than thirty (30) days before** the start date of the stay;
- **the remaining balance (10%)** must be paid in full **no later than seven (7) days before** the arrival of the participants.

**If the confirmation deposit is not paid within the specified time**, the reservation will be considered unconfirmed and will be **automatically cancelled without notice**.

In the event of late payment of the second deposit or the final balance, the Service Provider may **suspend or cancel the reservation, and late payment penalties expressly accepted by the Client** will be applied as follows:

- **1% of the remaining amount due per day of delay**

This penalty will be payable automatically, without any prior formal notice being necessary, and **without prejudice to any action aimed at obtaining compensation for the damage suffered**.

**In the event of cancellation by the Client** after confirmation of the reservation, the Service Provider may apply cancellation fees according to the following terms:

- **30% of the total amount** in the event of cancellation **more than 60 days** before the start date of the stay;
- **60% of the total amount** in the event of cancellation **between 60 and 30 days** before the start date of the stay;
- **100% of the total amount** in the event of cancellation **less than 30 days** before the start date of the stay, or in the event of no-show of the participants.

# GENERAL CONDITIONS OF SALE AND PUBLIC HOLIDAYS

**Registration for one of our courses implies acceptance of our general conditions of sale.**

Classes do not take place on the following public holidays:

- January 1, April 21, May 1, May 8, May 29, June 9, August 15, November 11, December 25, 2025.
- January 1, April 6, May 1, May 8, May 14, May 25, August 15, November 11, December 25, 2026.
- This does not give rise to any reimbursement, compensation or postponement.

## INDIVIDUAL REGISTRATION

**To register, you must:**

- Be 16 years old on the start date of the courses excluding group stays;
- Register online at [glo-school.com](https://glo-school.com) or send the completed registration form, along with payment of the course and registration fees.

GLO.School declines all responsibility towards minors aged 16 to 18.

Parental authorization, duly completed and signed, must be returned with the registration form.

Minors under 18 years of age must be managed by their legal guardians for housing and food matters.

Registration fee for all face-to-face training: €95

## PAYMENT FOR COURSES

**Course and registration fees are due upon registration.**

Payment by bank transfer can be made online at [glo-school.com](https://glo-school.com) (secure payment via STRIPE).

Bank charges are the responsibility of the student.

## CONFIRMATION

Upon receipt of full payment of the course and registration fees, we will send the student by email (or by post upon request):

- A paid invoice;
- A registration certificate including the dates of the training;
- A certificate of accommodation specifying the contact details of the chosen accommodation.

These documents are required to apply for a long-stay visa at the French Consulate. For stays of less than 3 months, apply for a "tourist" visa.

## ARRIVAL AND DEPARTURE

Arrival is expected on the Sunday afternoon before the start of classes and departure on the Saturday morning following the end of classes. Students are asked to communicate their arrival date and time as soon as possible.

## INSURANCE

Each student must take out their own insurance, depending on the legislation of their country, covering illness, loss of money, valuables or luggage, theft, interruption of the internship for personal or health reasons and civil liability.

# CALENDAR AND PRICES 2025/26



## POSTPONEMENT AND CANCELLATION

Any postponement or cancellation must be the subject of a written request addressed to GLO.School.

**For a postponement, the following fees will be retained:**

- Postponement 10 days or more before the start of the course: €95;
- Postponement less than 10 days before the start of the course: €95 + cost of one week of training;
- Postponement from Friday afternoon (4:00 p.m., Paris Time, UTC+2) preceding the start of classes or when classes have already started: full course and registration fees.

**For cancellation, the following fees will be retained:**

- Cancellation 10 days or more before the start of the course: €190;
- Cancellation less than 10 days before the start of the course: €190 + cost of one week of training;
- Cancellation from Friday afternoon (4:00 p.m., Paris Time, UTC+2) before the start of the course or when the course has already started: full course and registration fees.

GLO.School reserves the right to cancel courses that do not attract sufficient registrations. In this case, the full amount paid will be refunded.

## CHANGES

Any changes (program, duration or accommodation) before or during the course involve an administration fee of €95.

## INTERRUPTION/ABSENCE

In the event of interruption or early departure, course fees will not be refunded.

Any course, hour, day or part of a course not attended by the student will not give rise to any refund, compensation or postponement.

## INTERNAL REGULATIONS

If the student's behavior is likely to harm the smooth running of services (courses, accommodation, leisure activities) or the reputation of GLO.School, the student will be immediately excluded, without notice or reimbursement.

## IMAGE RIGHTS

Unless otherwise notified by the participant at the time of registration, GLO.School may take photos or videos of students and use them in its information and communication materials.


## CLAIMS

GLO.School undertakes to carefully examine any complaint submitted to it by mail. In the event of a dispute between the parties, the dispute, depending on its classification, will be judged by the jurisdiction of the Nanterre High Court, on which GLO.School depends.

**CONTACT US :**

[info@glo-school.com](mailto:info@glo-school.com)



A full-page background image of the Eiffel Tower in Paris, France, viewed from a low angle. The tower is a brownish-red color and stands against a blue sky with scattered white clouds. Green tree branches are visible in the top left and top right corners. At the base of the tower, there are green trees and a bridge over a river. A semi-transparent blue wave-like graphic is overlaid on the bottom half of the image, containing the text and a globe icon.

# BEYOND LANGUAGES THE WORLD



GLO.School



GLO School



+33 659460104 GLO.School



info@glo-school.com